



Unit 12/276 New Line Road NSW 2158  
Telephone: (02) 9651-3663 | Fax: (02) 9651 5885  
Email: [service@tnelectrical.com](mailto:service@tnelectrical.com)

---

## Safety Tip #2: What to do if you have a Safety Switch which is tripping

Safety switches come in basically three types being, switch board mounted, power point mounted or on an extension lead, they will probably look similar to these:

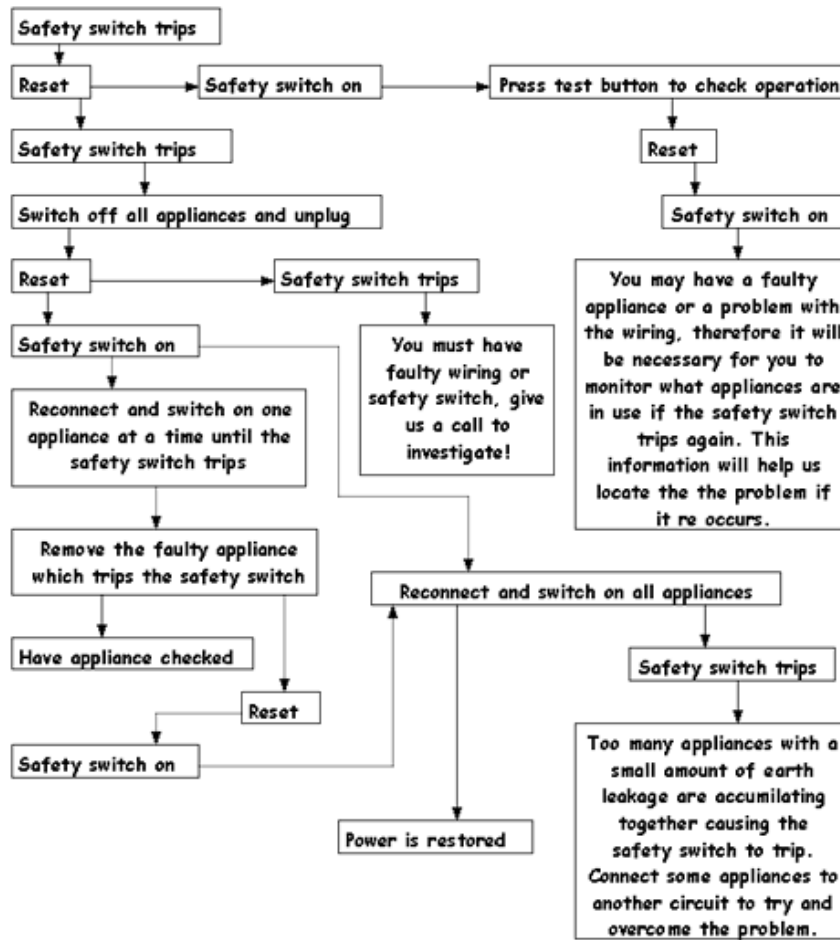


safety switch extension lead    safety switch - powerpoint    safety switch - switchboard

The function of a safety switch is to protect against electrocution and therefore save lives by detecting a leakage of current to earth. They are usually calibrated to trip at 30mA of earth leakage with a tripping time of 1 millisecond.

But it is *not a substitute* for common sense and we must always remember to be safe with electricity, never use appliances with frayed or damaged leads. If an appliance is identified as faulty do not use it until it has been repaired by a qualified person.

To restore the power if your safety switch has tripped follow this suggested sequence:



Please remember that a safety switch is a *Safety Device*. You should:

- *never* use appliances suspected to be faulty;
- *always* practice safe use of appliances;
- *never* use appliances near water.

Test your safety switch every month to ensure it is working, by pressing the test button, this simulates an earth fault!